

Application and processing

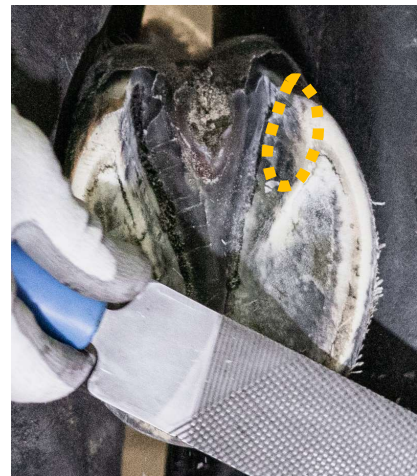
HuFREES

1. Thorough and clean hoof trimming and preparation as usual



Important for the adhesion of the adhesive: Also corner strut walls and white line clean and without residue!!!

Only shorten excess corner strut walls.
Leave strong →



Remove protective coating and dirt
from outer walls up to half the hoof




2. Attach liner (optional)

For a clean finish of the adhesive approx.
Apply 10mm above the edge of the carrier



Application and processing

HuFREES

3. Determine suitable  HuFREES-size analogous to Kerckhaert
- with or without 3/8" lug holes



4.  HuFREES
Roughen hoof side incl. edges



5.  HuFREES formen

- Heat up until light smoke develops



- Rough fit to hoof width
(narrower or wider)



- Cooling



Application and processing


HuFREES

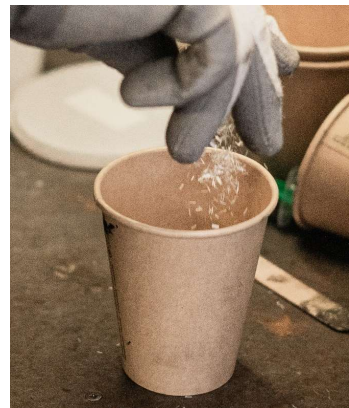
6. HuFREES final anpassen

- Mark the exact outline and grind to fit



7. Mixing the adhesive


- Observe accident prevention regulations
- Curing time is strongly dependent on outside temperature
 - varies from approx **3 min** at 30°C to approx **12 min** at 5°C
- Fill approx. 105ml per hoof into mixing cup. Currently recommended adhesive Equilox I or II
- Add  HuFREES - colorant (optional)
- Add 1 teaspoon of glass fiber
- Mix homogeneously with a spatula. If the outside temperature is high, hurry

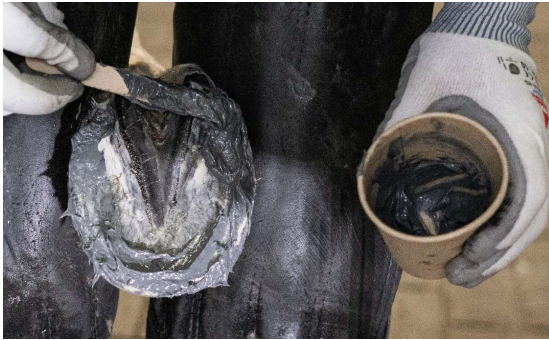


Application and processing

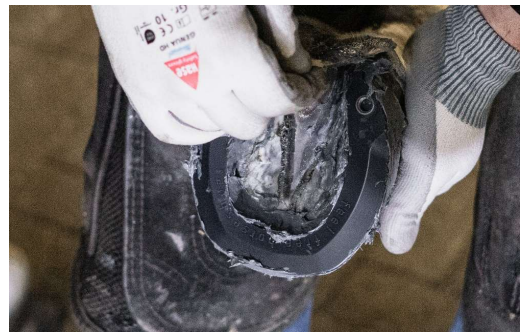
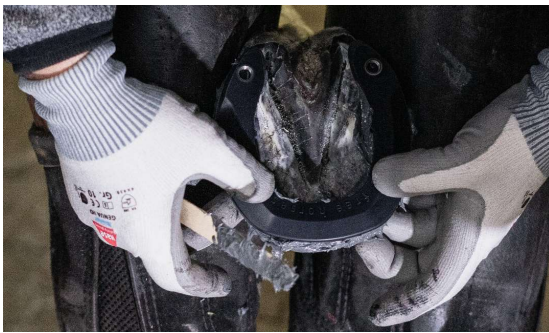
HuFREES


8. mount HuFREES

- Apply adhesive quickly and evenly to the supporting edge and  HuFREES



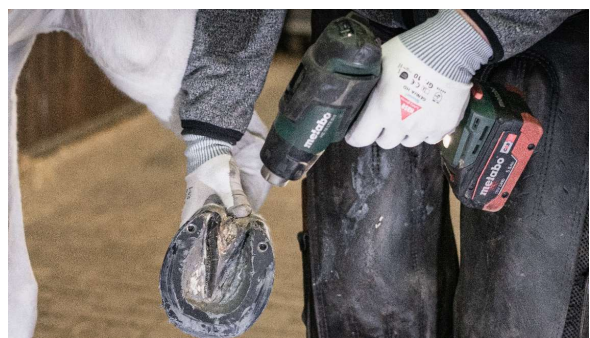
- Position the  HuFREES accurately.
Fill the edges, gripping edges on the braces and cavities



- For a clean finish, fill up to the liner and fill the protruding support surface of the  HuFREES with adhesive




- Finally, finish modeling with the glove while the adhesive is setting and dry with a hot air dryer if necessary



Application and processing

HuFREES

9. Visual finish

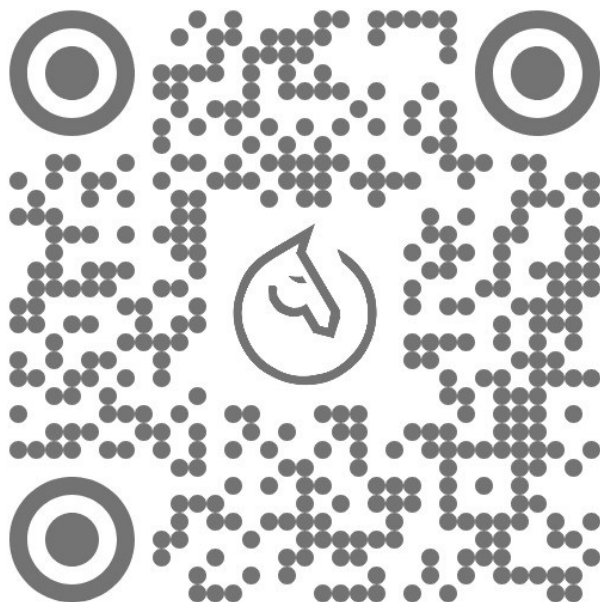
- Smooth the transition from hoof to adhesive, **but do not** expose the transition from bearing edge to  HuFREES



Further hoof care:

No oil, no grease and a stable that is as clean as possible

Scan to go to the homepage:



Video tutorial on YouTube:

